



Survey Artifact Lease Policy

Updated to: August 23, 2024

Contents

Survey Artifact Lease Agreement.....	2
Objects Available For Lease.....	4
Altimeters	5
Calculators	6
Chains.....	7
Chaining Pins	7
Clinometers	8
Compasses	9
Computers.....	10
EDMs	12
GPSs	17
Lettering Sets	19
Levels	20
Stride Levels	23
Plane Tables, Alidades.....	24
Radiophones.....	26
Planimeters	29
Range Poles.....	30
Rods	30
Stereoscopes	31
Theodolites.....	32
Transits	40
Miscellaneous Accessories	42

Survey Artifact Lease Agreement



Name of Lessee: _____

Address: _____

Phone Number: _____

Email: _____

The Lease shall commence on _____ and end one year thereafter.

By mutual agreement, the term of the lease may be extended for one year periods.

The annual lease fee shall be paid before the commencement of the lease term by any mutual agreed method.

The lessee shall be responsible for arranging and paying for shipping from Edmonton and for the return of the objects at the end of the lease period.

Any use of the objects other than for display purposes shall only be carried out with the written permission of the lessor.

The lessee shall be responsible for any loss or damage to the objects. The compensation thereof shall not exceed the estimated value of the objects.

The lessee shall not carry out any maintenance or repair to the objects without the written permission of the lessor.

Appendix 1, List of Artifacts Leased and Lease Fee, forms part of this Agreement and must be completed and submitted to info@albertalandsurveyhistory.ca along with this page.

Conditions Agreed to by:

<p>Lessee:</p> <p>_____</p> <p>Signed Date</p>	<p>Alberta Geomatics Historical Society:</p> <p>_____</p> <p>Signed Date</p>
--	--

Appendix 1: List of Artifacts Leased and Lease Fee

Artifacts leased			
	Object No.	Description	Value
1			
2			
3			
4			
5			
6			
7			

The Annual Lease Fee shall be:

For artifacts valued at \$400 and less: 10% of the listed value.

For artifacts valued from \$401 to \$1,000: \$40 plus 5% of the listed value over \$400.

For artifacts valued at \$1001 and above: \$70 plus 2% of the listed value over \$1000.

In addition, a one time handling fee of \$50 is charged for each total lease order, regardless of the number of artifacts.

Sample Calculation

	Value of Artifact	Up to \$400 10%	\$401 to \$1000 5%	\$1000 and above 2%	Total
1	\$100	\$10			\$10
2	\$300	\$30			\$30
3	\$800	\$40	\$20		\$60
4	\$1,500	\$40	\$30	\$10	\$80
5	\$5,000	\$40	\$30	\$80	\$150
6					\$
7					
Total					\$ 330
Gold Sponsor - 50% Discount,					-\$165
\$50 Handling charge					\$50
Total Annual Fee					\$215

	Value of Artifact	Up to \$400 10%	\$401 to \$1000 5%	\$1000 and above 2%	Total
1					
2					
3					
4					
5					
6					
7					
Total					
50% Discount for Gold Sponsors, 25% discount for Silver Sponsors					
\$50 Handling charge					
Total Annual Fee					

Download this file, extract pages 2 and 3, complete the form and email to info@albertalandsurveyhistory.ca.

Objects Available For Lease

Formatting of Artifact Descriptions:

Name of Object:

Object Number:

Location (Name of Donor of Object)

Listed Value:

Altimeters

Pennwait, Wallace & Tiernam
ALSA 2016.01.04
AGHS(SGB):
\$250.00



Pennwait, Wallace & Tiernam ALSA 2016.01.05 AGHS(SGB) \$250.00
See image above.

Short & Mason
ALSA 2007.07.01
AGHS (Unknown)
\$400.00



Thommen Everest
ALSA 2008.02.09
AGHS (Kinloch)
\$130.00



Thommen Everest ALSA 2007.07.01 AGHS (Koshman) \$130.00
See image above.

Calculators

DIGI-matic
ALSA 2008.02.02
AGHS (Kinloch)
\$20.00



DIGI-matic ALSA 2008.02.12 AGHS (Kinloch) \$20.00
DIGI-matic ALSA 2008.02.13 AGHS (Kinloch) \$20.00
DIGI-matic ALSA 2008.02.14 AGHS (Kinloch) \$20.00
DIGI-matic ALSA 2008.02.26 AGHS (Kinloch) \$20.00
DIGI-matic ALSA 2006.02.27 AGHS (Kinloch) \$20.00
See images above.

Odhner
ALSA 2006.18.01
AGHS (Hall)
\$350.00



Pocket, HP31E
ALSA 2008.02.01
AGHS (Kinloch)
\$200.00



Pocket, HP31E ALSA 2008.02.23 AGHS (Kinloch) \$200.00
See Image above.

Chains

Gunter's
ALSA 2008.03.13
AGHS (Kinloch)
\$300.00



Note: New (reproductions) available from India \$120 to \$200 CDN. Some with chaining pins

Chaining Pins

11 Pins in case (Newer)
ALSA 2007.31.01
AGHS (George)
\$30.00



Clinometers

Sokkisha
ALSA 2008.03.33
AGHS (Kinloch)
\$50.00



Clinometer, could be a Keuffel & Essler
ALSA 2007.31.02
AGHS (George)
\$50.00



Compasses

Brunton Pocket Transit
ALSA 2007.28.01
AGHS (Weir)
\$40.00



Surveyors, John Davis & son. c/w tripod
ALSA 2010.06.05
AGHS (Cherwonick)
\$3,000.00



Surveyors, Short & Mason c/w staff
ALSA 2016.05.02
AGHS (Moyer)
\$300.00



Surveyors, W & LE Gurley
ALSA 2007.27.07
AGHS (Weir)
\$1,500.00



Computers

Hewlett Packard HP 85
ALSA 2010.03.01
AGHS (Woodhead)
\$700.00



Monroe 324
ALSA 2008.14.07
AGHS Williams
\$20.00



Monroe 324G ALSA 2008.14.06.01 AGHS Williams \$20.00
See image above.

Pocket HP25
ALSA 2008.02.05
AGHS (Kinloch)
\$350.00



Pocket HP25
ALSA 2008.02.25
AGHS (Kinloch)
\$350.00



Pocket HP33E

ALSA 2008.02.03
AGHS (Kinloch)
\$200.00



Pocket HP41CX
ALSA 2008.02.20
AGHS (Kinloch)
\$100.00



Everex 386
ALSA 2008.02.16
AGHS (Kinloch)
\$200.00



EDMs

Geodimeter Model 116

ALSA 2008.09.03

AGHS (George)

\$300.00



Hewlett Packard 3800A

ALSA 2015.04.02

AGHS (H&O)

\$300.00



Hewlett Packard 3800A

ALSA 2016.04.02

AGHS (Cheetham)

\$300.00



Hewlett Packard 3805A
ALSA 2013.05.01
AGHS (Haggerty)
\$300.00



Hewlett Packard 3808A
ALSA 2008.14.05
AGHS (Williams)
\$300.00



Hewlett Packard 3810A
ALSA 2008.10.16
AGHS (Cross)
\$300.00



& E Ranger 5
ALSA 2006.05.06
AGHS (DoS)
\$300.00



Sokkisha Red 1A
ALSA 2008.10.13

AGHS (Cross)
\$400.00



Sokkisha Red 2
ALSA 2022.02.05
AGHS (Pinchas)
\$400.00



Sokkisha Red 2
ALSA 2009.06.04
AGHS (Frederick)
\$400.00



Sokkisha Red 2L
ALSA 2008.10.12
AGHS (Cross)
\$400.00



Tellurometer MA 100
ALSA 2008.03.19
AGHS (Kinloch)
\$400.00



Tellurometer MRA 1, Remote
ALSA 2016.01.02
AGHS (SGB)
\$400.00



Tellurometer MRA 2 A
LSA 2007.12.03
AGHS (Carlson)
\$400.00



Tellurometer MRA 2 ALSA 2007.12.04 AGHS (Carlson) \$400.00
Tellurometer MRA 2 ALSA 2007.12.05 AGHS (Carlson) \$400.00
See image above.

Topcon, Guppy GTS-10D
ALSA 2015.04.01
AGHS (H&O)
\$400.00



Wild Distomat D110
ALSA 2010.13.11
AGHS (Glubrecht)
\$1,500.00



Wild Distomat D1 1600
ALSA 2009.07.05
AGHS (Gudim)
\$300.00



GPSs

GPS, Handheld, Magellan 5000 Pro
ALSA 2022.02.02
AGHS (Pinchas)
\$80.00



GPS Set 2

GPS, Leica, Receiver, SR299E
ALSA 2010.12.01
AGHS (Maltais)
\$800.00



GPS, Sensor, SR9400
ALSA 2010.12.07
AGHS (Maltais)
incl above



GPS, Leica, Controller, CR244
ALSA 2010.12.08
AGHS (Maltais)
incl above



GPS, Leica, Antenna, AT 202
ALSA 2010.12.05
AGHS (Maltais)
incl above



GPS Set 3

GPS, Leica, Receiver, SR399 ALSA 2010.12.02 AGHS (Maltais) \$800.00
GPS, Sensor, SR9400 ALSA 2010.12.07 AGHS (Maltais) incl above
GPS, Leica, Controller, CR333 ALSA 2010.12.09 AGHS (Maltais) incl above
GPS, Antenna, AT201 ALSA 2010.12.04 AGHS (Maltais) incl above
Same images as set 2.

Extra Units

GPS, Leica, Receiver, SR399 ALSA 2010.12.02 AGHS (Maltais) TBD
GPS, Leica, Controller, CR333 ALSA 2010.12.09 AGHS (Maltais) TBD
GPS, Leica, Controller, CR333 ALSA 2010.12.09 AGHS (Maltais) TBD
GPS, Leica, Controller, CR333 ALSA 2010.12.09 AGHS (Maltais) TBD
GPS, Leica, Controller, CR333 ALSA 2010.12.09 AGHS (Maltais) TBD
GPS, Leica, Controller, CR344 ALSA 2010.12.10 AGHS (Maltais) TBD
Same images as set 2.

GPS, Antenna, AT201 ALSA 2010.12.04 AGHS (Maltais) TBD
GPS, Antenna, AT201 ALSA 2010.12.04 AGHS (Maltais) TBD
GPS, Antenna, AT201 ALSA 2010.12.04 AGHS (Maltais) TBD
Same Images as set 2.

Lettering Sets

Unitech
ALSA 2008.14.18
AGHS (Williams)
\$100.00



Levels

P & R Wittstock c/w tripod
ALSA 2006.10.01
AGHS (Purchased)
\$600.00



Cooke, Troughton & Simms. c/w tripod
ALSA 2006.05.01
AGHS (D of S)
\$500.00
No image available

Construction
ALSA 2007.10.01
AGHS (Unknown)
\$100.00



Construction – Starrett. c/w metal legs
ALSA 2010.04.01
AGHS (Berthelot)
\$150.00



Stanley

ALSA 2007.27.05
AGHS (Weir)
\$300.00



Sokkisha, TTL5
ALSA 2008.10.10
AGHS (Cross)
\$80.00



Tokyo, Model T2
ALSA 2016.04.06
AGHS (Cheetham)
\$100.00



Topcon, Auto
ALSA 2007.26.01
AGHS (Cummings)
\$200.00



Zeiss c/w tripod
ALSA 2008.02.19
AGHS (Kinloch)

\$400.00



Wild N2
ALSA 2008.08.05
AGHS (Gullion)
\$400.00



Kern, GKO-A
ALSA 2008.10.11
AGHS (Cross)
\$100.00



Stride Levels

Level Stride
ALSA 2016.01.12
AGHS (SGB)
\$50.00



Plane Tables, Alidades

Plane Table, Includes tripod.

ALSA 2012.02.01

AGHS (Breton)

\$900.00

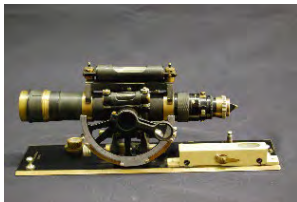


Alidade, K&E

ALSA 2012.02.02

AGHS (Breton)

incl above



Trough Compass

ALSA 2013.01.02

AGHS (Breton)

incl above



Alidade, W. & L.E. Gurley

ALSA 2007.05.01

AGHS (Unknown)

\$300.00



Trough Compass
ALSA 2007.28.02
AGHS (Weir)
\$50.00



Trough Compass
ALSA 2012.01.01
AGHS (Frederick)
\$50.00



Radiophones

GE

ALSA 2008.10.26

AGHS (Cross)

\$50.00



Cantel

ALSA 2008.10.25

AGHS (Cross)

\$50.00



Motorola

ALSA 2022.02.06

AGHS (Pinchas)

\$50.00



Midland

ALSA 2022.02.07

AGHS (Pinchas)

\$50.00



WR Communications

ALSA 2008.02.06
AGHS (Kinloch)
\$50.00



ICOM
ALSA 2008.02.07
AGHS (Kinloch)
\$50.00



Fenon
ALSA 2008.02.15
AGHS (Kinloch)
\$50.00



Johnson
ALSA 2008.02.17
AGHS (Kinloch)
\$50.00



Johnson
ALSA 2008.02.18
AGHS (Kinloch)

\$50.00



Midland
ALSA 2011.07.01
AGHS (ALSA)
\$50.00



Planimeters

Planimeter
ALSA 2006.11.01
AGHS (Din)
\$100.00



Stanley
ALSA 2007.28.03
AGHS (Weir)
\$100.00



A.OTT
ALSA 2008.14.09
AGHS (Williams)
\$100.00



Alpha
ALSA 2010.05.01
AGHS (Snell)
\$100.00



Range Poles

Aluminium 12 feet
ALSA 2008.03.03
AGHS (Kinloch)
\$50.00

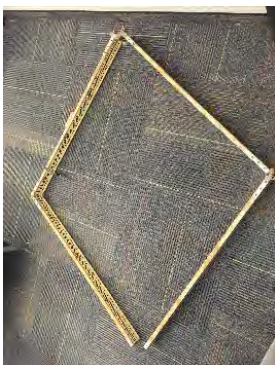


Rods

Leveling, Metric
ALSA 2008.10.22
AGHS (Cross)
\$60.00



Leveling, Folding
ALSA 2016.02.03
AGHS (Dawson)
\$60.00



Stereoscopes

Desk

ALSA 2019.01.01

AGHS (IBI Group)

\$100.00



Surveyor's Tapes

ALS Standard,

Several

Various

\$40.00



Link Several 100 to 500 links Various \$80.00 to \$100.00

Feet Several 50 feet to 200 feet Various \$20 to \$80

Metric Several 30 metres to 150 metres Various \$20 to \$70

Theodolites

Cooke, Troughton & Simms
ALSA 2006.19.01
AGHS (Unknown)
\$600.00



Cooke, Troughton & Simms c/w tripod
ALSA 2006.20.01
AGHS (Unknown)
\$800.00



Cooke, Troughton & Simms
ALSA 2006.21.01
AGHS (Unknown)
\$600.00



Cooke, Troughton & Simms c/w tripod
ALSA 2006.26.01
AGHS (D of S)
\$800.00



Cooke, Troughton & Simms c/w tripod A
LSA 2016.04.04
AGHS (Cheetham)
\$700.00



T. Cooke & Sons Ltd
ALSA 2007.27.06
AGHS (Weir)
\$800.00



E. R. Watts & Son c/w tripod
ALSA 2007.02.01
AGHS (Unknown)
\$1,000.00



Kern DK2
ALSA 2009.07.02
AGHS (Gudim)
\$600.00



Kern DKM 3
ALSA 2016.01.06
AGHS (SGB)
\$800.00



Kern DKM 1 c/w tripod.
ALSA 2006.23.01

AGHS (Unknown)
\$700.00



ALSA 2006.03.11

aus JENA
ALSA 2008.10.20
AGHS (Unknown)
\$300.00



ALSA 2008.10.20

Wild T16
ALSA 2009.08.01
AGHS (Maltais)
\$400.00



Wild T16
ALSA 2014.02.05
AGHS (Loeppky)

\$400.00



Wild T1

ALSA 2009.07.01

AGHS (Gudim)

\$400.00



Wild T1A

ALSA 2016.04.01

AGHS (Cheetham)

\$400.00



Wild T2

ALSA 2009.07.03

AGHS (Gudim)

\$600.00



Wild T3
ALSA 2016.01.07
AGHS (SGB)
\$2,000.00



Wild T3
ALSA 2015.02.01
AGHS (SGB)
\$2,000.00



Wild T4
ALSA 2016.01.01
AGHS (SGB)

\$7,000.00



Sokkisha TM20C
ALSA 2008.08.06
AGHS (Storage)
\$200.00



Sokkisha TM6
ALSA 2013.06.01
AGHS (Can Am)
\$200.0



Geodetic, E. R. Watts & Son
ALSA 2016.01.03
AGHS (SGB)

5,000.00



Geodetic, Bausch, Lomb, Saeg

ALSA 2016.01.09

AGHS (SGB) Old

\$5,000.00



Geodetic Kern

ALSA 2016.01.11

AGHS (SGB)

5,000.00



Hilger & Watts

ALSA 2016.04.03

AGHS (Cheetham)

\$250.00



Total Stations

Topcon, GPT-6005C
ALSA 2008.10.14
AGHS (Cross)
\$1,000.00



Topcon, Guppy GTS-100
ALSA 2015.04.01
AGHS (H&O)
\$400.00



Transits

Ainsworth c/w tripod
AGHS 2024.02.01

AGHS (Willis)
\$500.00



Keuffel & Esser c/w tripod
ALSA 2012.05.03
AGHS (Peverelle)
\$400.00



Westec c/w tripod
ALSA 2013.03.01
ALSA (Focus)
\$250.00



Dietzgen c/w tripod
ALSA 2013.04.01
ALSA (Lethbridge College)
\$250.00



Miscellaneous Accessories

Rental cost to be determined.

- Several Tripods,
- Several Slide Rules,
- Drafting Instruments including Compasses, Drafting Sets, Electric Erasers, Pen Nib Sets, Lettering Guides, Field Books, etc.,
- Six Survey Post Locators including three Aqua's,
- Several Monuments including Township Corner Monuments, Tin Plates, etc.,
- Several Plumb Bobs, Plumbing Rods, Prisms, Right Angle Prisms, Tribrach's,
- Chaining Pins, Tension Handles, Chaining Clamps, Thermometers, Tape Repair Kits. etc.